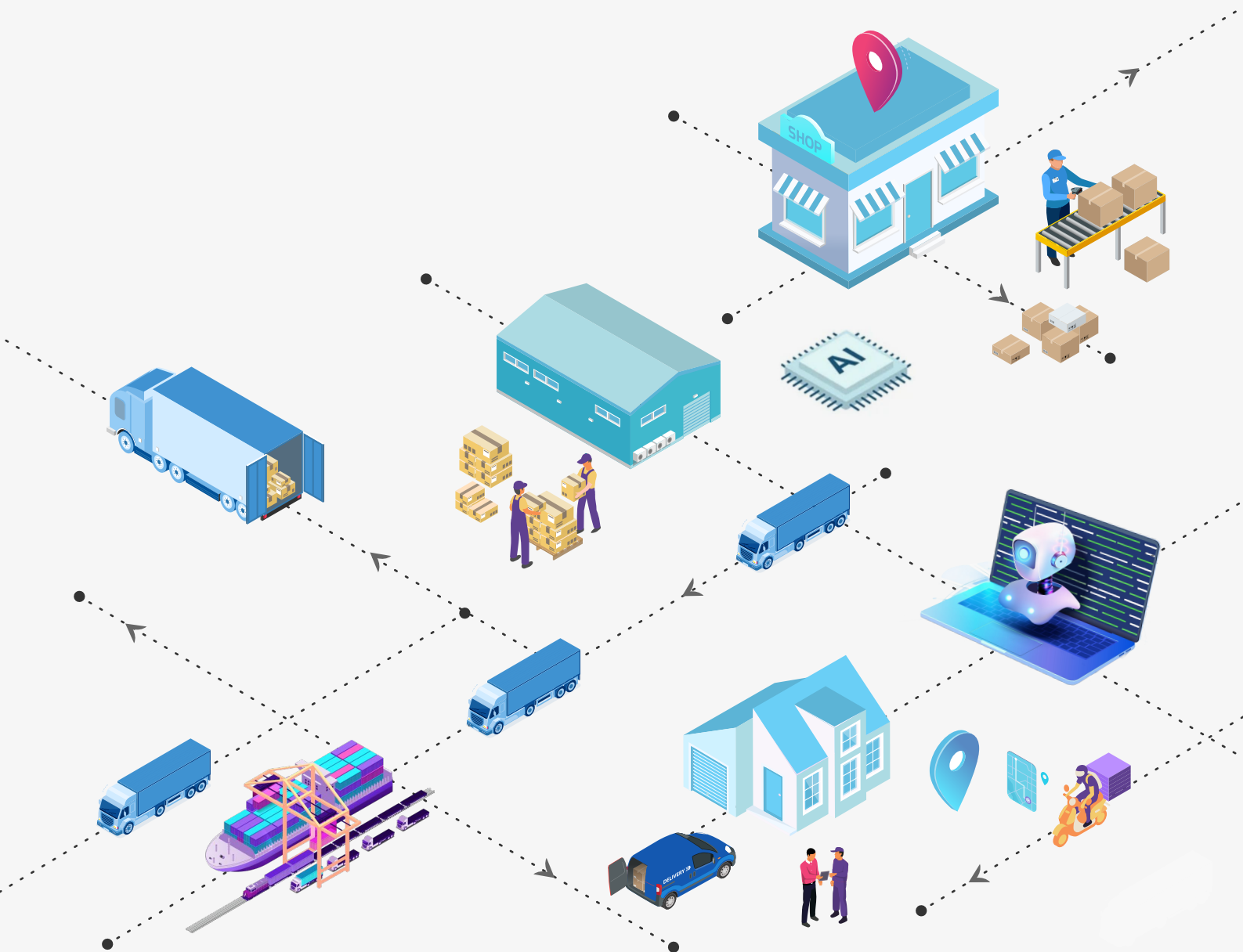


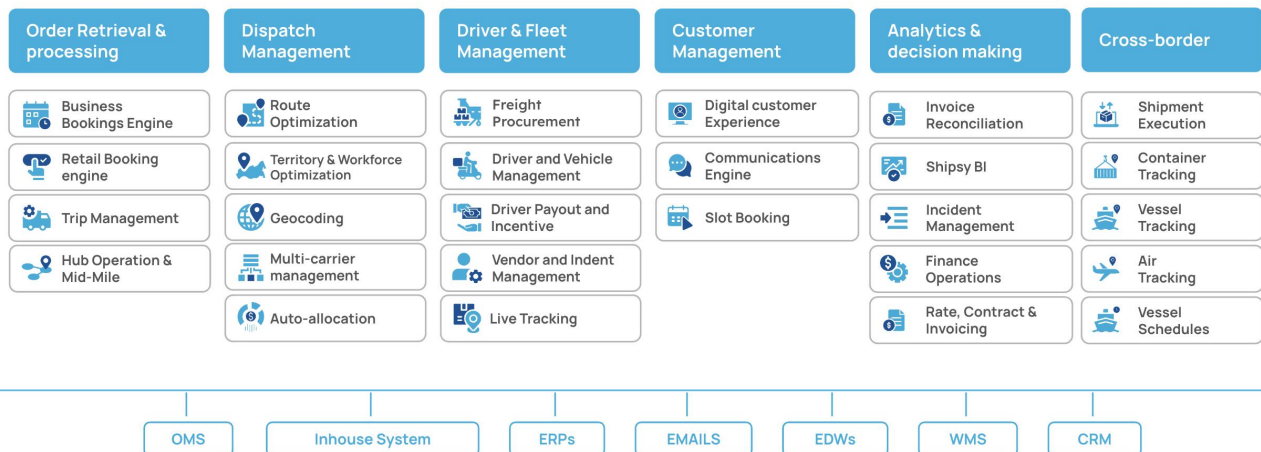


# Shipsy TMS: Drive AI-Powered Logistics Orchestration & Execution

Shipsy is a leading global supply chain orchestration and execution solution provider. We're enabling businesses to save costs, improve operational efficiencies, enhance workforce productivity, drive superior customer experiences and achieve sustainability goals.



## End to End Transportation Management Platform



## Featured vendor in the 2024 Gartner MQ for TMS

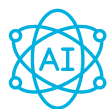
Peer Insights™



4.8/5

Among 14 of the top global TMS vendors in the Magic Quadrant 2024

Shipsy's strengths mentioned in the Gartner report



High focus on innovation & AI capabilities



Strong Y-o-Y Growth



Customer centric culture & positive customer feedback

**Shipsy**  
Products: Shipsy Route Planning and Optimization Software, Shipsy Multi-Carrier Management, Shipsy International Logistics

4.9 ★★★★★ 134 Ratings

5 Star	93%
4 Star	6%
3 Star	0%
2 Star	1%
1 Star	0%

"Ground Breaking Services provided by Shipsy's product."

As an End customer of Shipsy, Our Client's experience has been amazing, especially with the support teams, they always solve the queries within 24 hours and their staff is available 24\*7 for support, ...

[Read Reviews](#)



## Single Platform for End-to-End Logistics Orchestration

- Automate processes to plan, procure, execute, track and audit transportation for every shipment
- Manage hub-to-hub, hub-to-store, and last-mile deliveries all on one platform
- Assign, track & manage deliveries across own fleet, market vehicles, and 3PLs

## Generate Optimal Dispatch Plans

- Consolidate loads for optimal FTL & PTL mix and automatically select the best-suited carrier & contract
- Create optimal routes and vehicle mix based on order, vehicle, and objective constraints reducing TAT & market vehicle requirement
- Use a real-time dashboard to optimize transportation and capacity planning based on cost, distance and vehicle requirement reduction etc.





## Automate Transporter Indent Management

- Easily upload vendor lists via Excel or platform and masters of vendors with rate contracts, cost structure, capacity of vehicles, available geography and more
- Prioritize vendors at regional and a pin code level as L1, L2 or L3
- Raise requests to vendors through our portal, WhatsApp, SMS, or email, allowing them to respond with vehicle and driver details
- The system automatically cascades to L2 & L3 vendors based on your predefined prioritization in case L1 vendor doesn't respond within a specified time

## Drive Intelligent Multi-Carrier Management

- Deploy a single API and ready-to-use integrations to collaborate with multiple 3PLs
- View, manage and track order statuses and carrier KPIs in real time on a unified platform
- Use an AI-powered order allocation engine to assign orders to 3PLs based on objectives like 'cheapest,' 'fastest,' 'best customer rated,' etc
- Auto-extract order info, get standardized label format accepted across LSPs, get indicative shipment costs & receive proactive alerts on deviations
- Benchmark 3PL performance, and analyze metrics important to you



## Provide Real-Time Visibility to Stakeholders

- Track live location and status of shipments across carriers via SIM, GPS or App-based tracking
- Enable B2B/B2C businesses to track shipments using our merchant portal and provide end customers an 'Uber-like' delivery experience real-time tracking & ETAs
- Notify customers at every stage of delivery through Email, SMS or WhatsApp

## Deploy AI-Powered Address Intelligence

- Validate addresses against a global database and receive accurate recommendations for invalid entries.
- Auto-correct pin/area codes using geospatial data, and find the nearest serviceable code for non-serviceable areas.
- Geocode addresses to get the exact latitude/longitude or use reverse geocoding to get the address from coordinates



## Manage & Resolve Incidents Using Shipsy's AI Co-pilot

- Shipsy's intelligent engine analyzes operational KPIs 24x7, detects efficiency breaches, and raises immediate alerts
- Incidents are auto-assigned to the most suitable team member, with detailed analysis available at specific object or entity levels (e.g., hub/rider)
- Gain a comprehensive view of all your operational metrics in a single, user-friendly mobile app & analyze all incidents on a single page



## In-Depth Analytics on Logistics Performance

- Evaluate vendor performance, 3PLs, vehicles, drivers, and failed deliveries for improved decision-making
- Receive real-time alerts on KPI breaches and incidents using AI and predictive intelligence, and forecast future demand to optimize logistics operations.
- Use ShippyBI to analyze critical KPIs like On-Time Vehicle Placement, Time Spent at Warehouse, Delivery Schedule Adherence, Route Deviation, Vehicle Capacity Utilization etc.



## Streamline Invoice Reconciliation & Audit

- Generate digital invoices and audit invoices with a 4-way maker-checker reconciliation
- Automatically calculate penalties in case of SLA breaches
- Create interactive dashboards and visualize data using ShippyBI

## Drive Superior Digital Customer Experiences

- Set up automated SMS, WhatsApp and email communications that are triggered when a shipment moves along different stages of delivery
- Use WhatsApp chatbot to communicate with customers
- Allow customers to track delivery progress by sharing live-tracking links before delivery
- Send "now arriving" notifications to customers via SMS, WhatsApp or API when orders are about to reach



## Business Impact at a Glance

**40%**

Decrease in market vehicle requirements

**14%**

Decrease in overall transportation cost

**28%**

Reduction in customer complaints

**20%**

Reduction in average delivery time

**35%**

reduction in people cost by adding AI Co-pilots

**18%**

Increase in delivery NPS